



Aluminium Scaffold Towers Ltd.

01353 778811

sales@aluminium-scaffoldtowers.co.uk

www.aluminium-scaffoldtowers.co.uk

850 Mobile Aluminium Scaffold Tower Tested and Certified to EN 1004-1:2020



Type Approved
Safety
Regular Production
Surveillance
www.tuv.com
ID: 1111247258

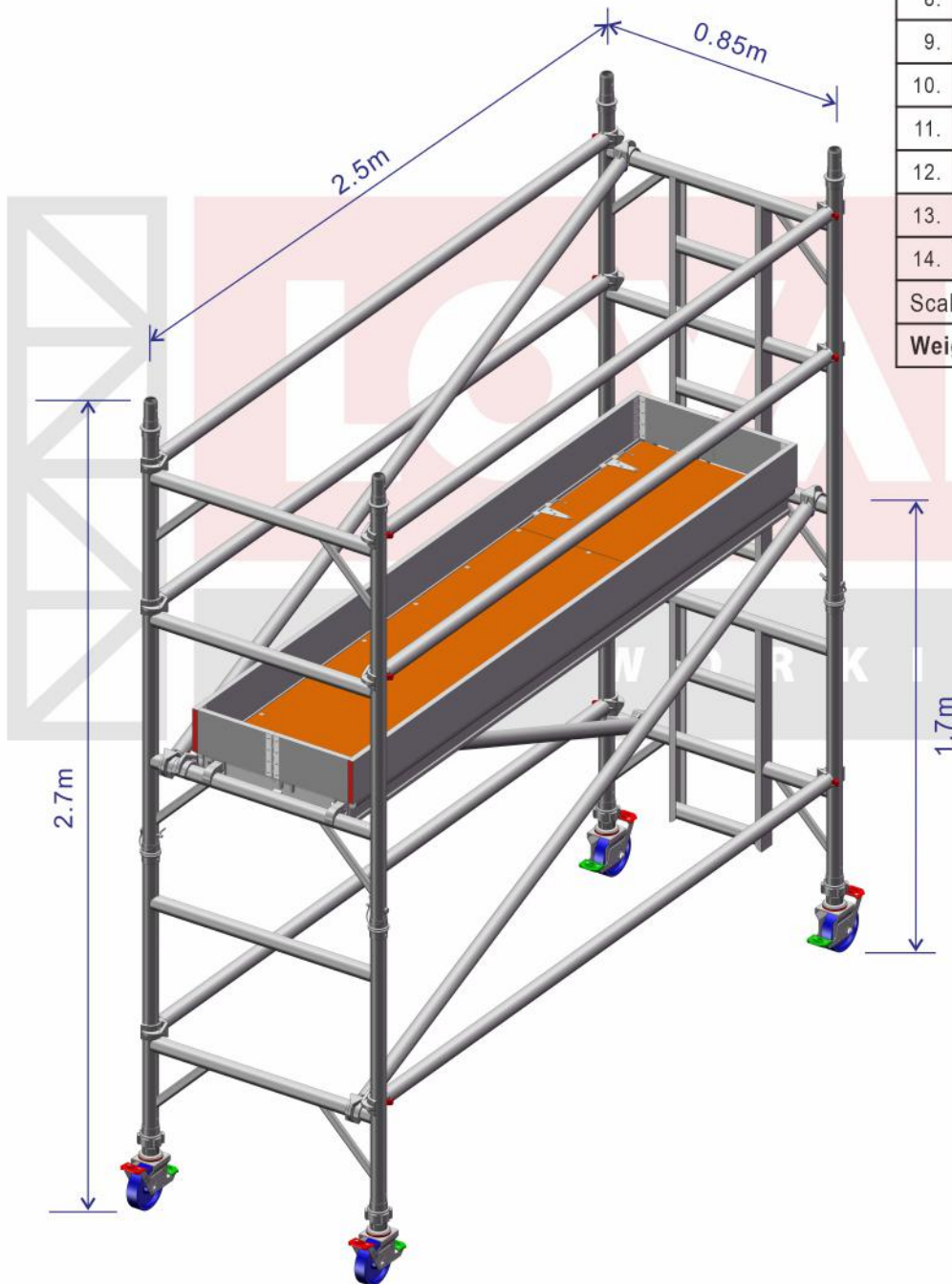
Tower Dimension : 0.85m(W) x 2.5m(L) x 2.7m(H)
Max. Platform Height : 1.7m, Max. Working Height : 3.7m

Maximum Working Load :
Tower - 950 kg including tower self weight
Platform - 275 kg when load uniformly distributed

Item	Description	Qty.
1.	Castor Wheel 150mm dia. W/Adj. Leg	4
2.	850 2 Rung Ladder Frame 0.85m x 1.0m	1
3.	850 2 Rung Span Frame 0.85m x 1.0m	1
4.	850 3 Rung Ladder Frame 0.85m x 1.5m	1
5.	850 3 Rung Span Frame 0.85m x 1.5m	1
6.	850 4 Rung Ladder Frame 0.85m x 2.0m	-
7.	850 4 Rung Span Frame 0.85m x 2.0m	-
8.	Trapdoor Platform 0.6m x 2.5m	1
9.	Horizontal Brace 2500 (Red)	6
10.	Diagonal Brace 2700 (Blue)	3
11.	Folding Toeboard 0.6m x 2.5m	1
12.	Fixed Outrigger - Small	-
13.	Telescopic Outrigger - Medium	-
14.	Telescopic Outrigger - Large	-

Scale : NTS Ref. : SW-2700-25

Weight : approx. 82.4kg



1.7m

2.7m

2.5m

0.85m

SAFE WORKING