



Aluminium Scaffold Towers Ltd.

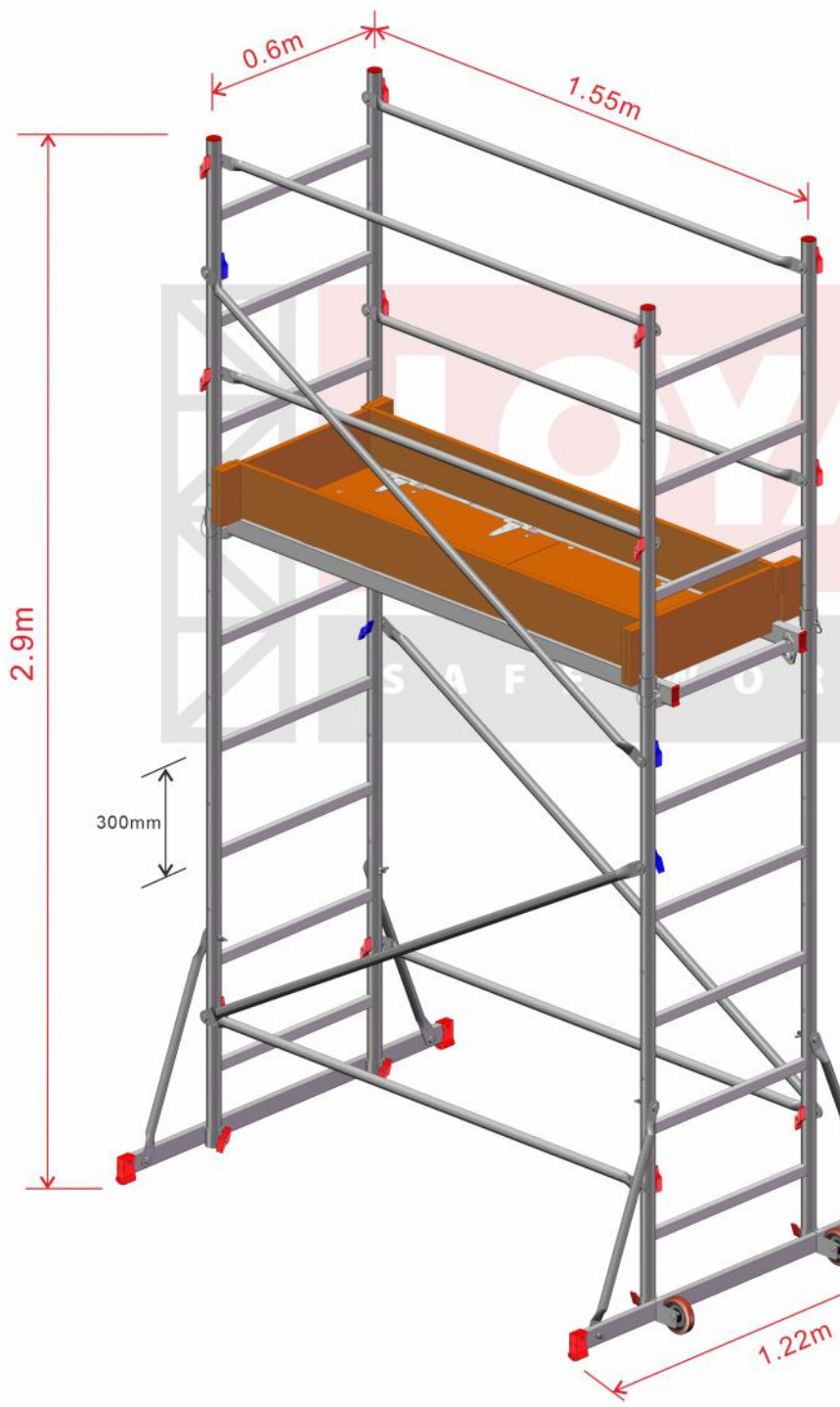
01353 778811 sales@aluminium-scaffoldtowers.co.uk

www.aluminium-scaffoldtowers.co.uk

MDIY 4 Aluminium Scaffold Tower (eDIY + Stiffeners)

Tower Dimension : 0.6m(W) x 1.55m(L) x 2.90m(H)
Platform Height : 1.8m, Max. Working Height : 3.8m

Safety Working Load : Platform - 150 kg when load uniformly distributed



Item	Description	Qty.
1.	DIY 6 Rung Base Frame	2
2.	DIY 3 Rung End Frame	2
3.	DIY Combination Brace	2
4.	DIY Horizontal Brace	2
5.	DIY Diagonal Brace	1
6.	DIY Trapdoor Platform 500 x 1550	1
7.	Base Bar Unit (c/w Ø100mm Castor)	1
8.	Base Bar Assemble Unit	1
9.	Stiffeners	4
10.	DIY Horizontal Brace (Optional)	2
11.	Wooden Toeboard Set (Optional)	1

Scale : NTS

Ref. : MDIY-300-4000

